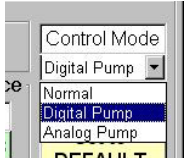
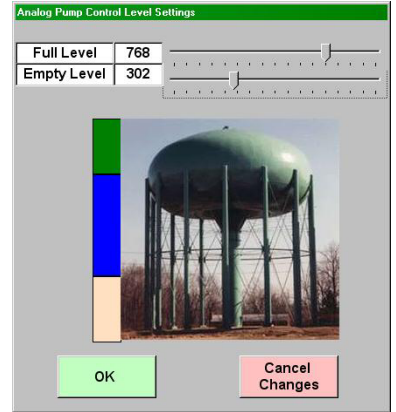


# RFScada....Complete Tank / Pump Control Included!



The **RFScada** units allow remote signal routing of analog and digital signals. In some situations additional control modes are needed, for example controlling outputs depending on input conditions, or sequences of input conditions. Typically a PLC or similar control computer is used to provide this control 'logic'. The RFScada devices have control routines built in for typical well and tank control applications, saving the expense of buying, programming and maintaining additional controls, PLC's and computers.

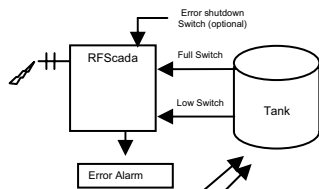
For many rural water and similar applications a tank at the top of a hill is filled by one or two pumps at another location. Signals from level switches or an analog level transducer on the tank are transmitted via the built radio to another RFScada unit located by the pump. The RFScada units will automatically turn on and off the pump to maintain a desired level in the tank. Set the water level either by the switch level settings, or if using an analog transducer use the RFScada configuration program to enter the desired water level.



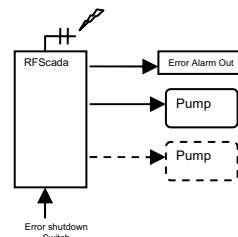
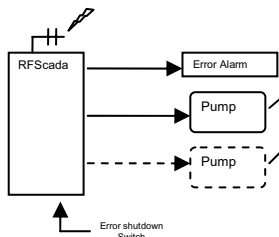
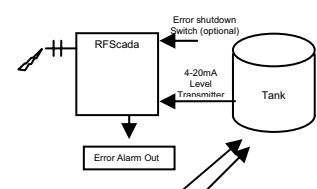
Many systems run just one pump at a time but have two for backup purposes, and a common requirement is to operate them sequentially, to verify operation of both units and to share wear between them. The RFScada well control mode also supports automatic toggling of dual pumps, replacing more costly external control logic.

Additional inputs can also be used to force the pumps off and activate any alarm or error relays, these inputs would typically be connected to access door switches, gate interlocks etc. to shutdown the system and sound alarms if un-authorized personnel gained access, leaks are detected, additive tanks were empty etc.

Complete, Standalone, Remote Pump & Tank Control System Using RFScada Digital Pump Control Mode



Complete, Standalone, Remote Pump & Tank Control System Using RFScada Analog Pump Control Mode



**NO  
PLC**



**NO  
COMPUTER**



**NO  
RELAY PANEL**



**NO GURU  
PROGRAMMING**



**NO HUGE  
EXPENSE**



120 NE DeBell Suite B, Bartlesville OK 74006  
 Tel 918-335-3318  
 Fax 918-335-3328  
 internet..... [www.datadeliverydevices.com](http://www.datadeliverydevices.com)  
 email..... [info@datadeliverydevices.com](mailto:info@datadeliverydevices.com)