



## RFScada directly supported by DAQFactory

The **RFScada** system by Data Delivery Devices LLC provides a reliable, economical system for long range wireless control & monitoring of remote signals. Capable of operating with over 500 analog & digital inputs, over 500 analog & relay outputs there are few applications it cannot interface with. Typically the RFScada units operate as a standalone system, exchanging signals and operating controls between units via built in radio telemetry. Sometimes however, more detailed control, logging and historical data analysis provided by a PC is required. An RS-232 (and RS-485) hardware interface to a PC is standard on RFScada 8ADI-9DO & 4ADI-5DO units, so all that's required is the PC software.....

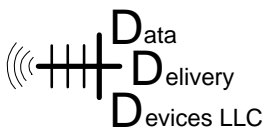


**DAQFactory** by Azeo Tech is a user configurable control and monitoring program development system for the PC. It allows easy creation of custom PC programs for monitoring, logging, display and control of real time data; it includes features such as control buttons, alarms, gauges, images, email alarms, internet connection, graphs, animation, logging to disk etc. Now DAQFactory has built in device drivers *specifically written for communicating with RFScada systems*, so custom applications can quickly be assembled using a PC to control, monitor and log all I/O accessed with an RFScada system.

**Surprisingly economical** solutions are available to operate and monitor remote systems, using the RFScada system and a PC running a DAQFactory application. The application may be custom written for your needs by Data Delivery Devices, or you can write it using DAQFactory with built in RFScada support. A typical application with an unlimited run time license may cost a lot less than you'd expect, call Data Delivery Devices today to discuss the application.



**RFScada** *Download the complete documentation & manuals from the web!!*



[www.datadeliverydevices.com](http://www.datadeliverydevices.com)

3996 Wright Road, Bartlesville OK 74006

Tel 918-335-3318 Fax 918-398-9990

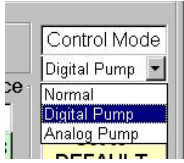
[www.datadeliverydevices.com](http://www.datadeliverydevices.com) email.....[info@datadeliverydevices.com](mailto:info@datadeliverydevices.com)



*Download the complete DAQFactory demo & manuals from the web!!*

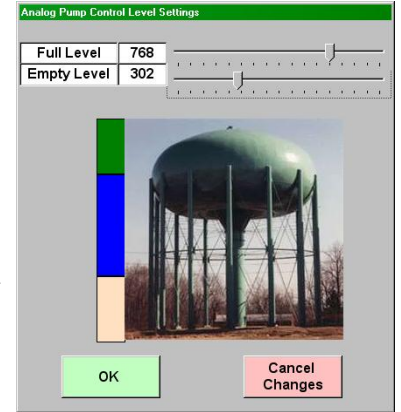
[www.azeotech.com](http://www.azeotech.com)

# RFScada....Complete Tank / Pump Control Included!



The **RFScada** units allow remote signal routing of analog and digital signals. In some situations additional control modes are needed, for example controlling outputs depending on input conditions, or sequences of input conditions. Typically a PLC or similar control computer is used to provide this control 'logic'. The RFScada devices have control routines built in for typical well and tank control applications, saving the expense of buying, programming and maintaining additional controls, PLC's and computers.

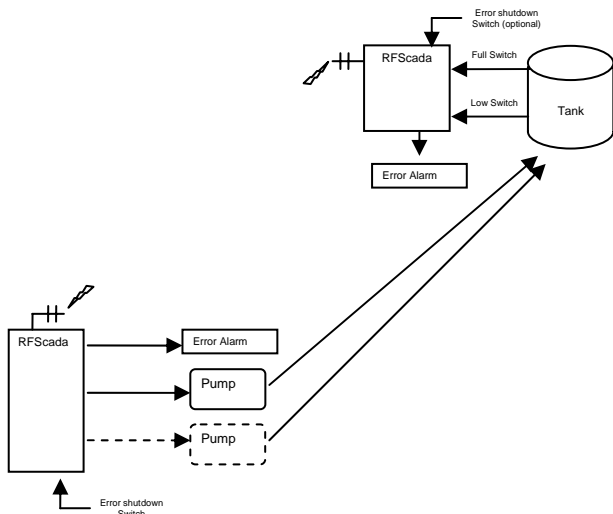
For many rural water and similar applications a tank at the top of a hill is filled by one or two pumps at another location. Signals from level switches or an analog level transducer on the tank are transmitted via the built radio to another RFScada unit located by the pump. The RFScada units can automatically turn on and off the pump to maintain a desired level in the tank. Set the water level either by the switch level settings, or if using an analog transducer use the RFScada configuration program to enter the desired water level.



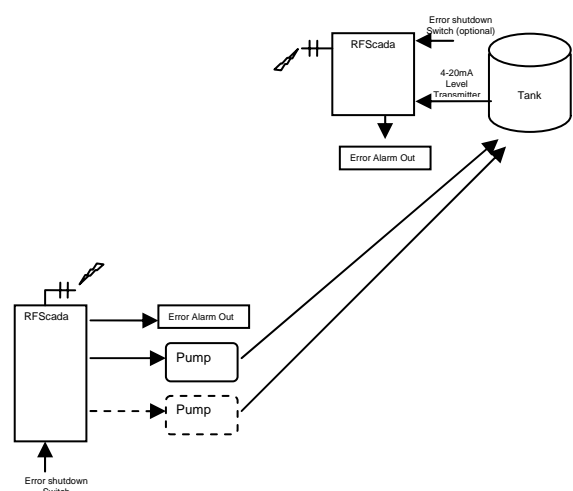
Many systems run just one pump at a time but have two for backup purposes, and a common requirement is to operate them sequentially, to verify operation of both units and to share wear between them. The RFScada well control mode also supports automatic toggling of dual pumps, replacing more costly external control logic.

Additional inputs can also be used to force the pumps off and activate any alarm or error relays, these inputs would typically be connected to access door switches, gate interlocks etc. to shutdown the system and sound alarms if un-authorized personnel gained access, leaks are detected, additive tanks were empty etc.

Complete, Standalone, Remote Pump & Tank Control System Using RFScada Digital Pump Control Mode



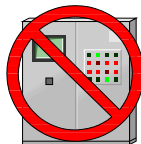
Complete, Standalone, Remote Pump & Tank Control System Using RFScada Analog Pump Control Mode



**NO  
PLC**



**NO  
COMPUTER**



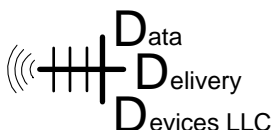
**NO  
RELAY PANEL**



**NO GURU  
PROGRAMMING**



**NO HUGE  
EXPENSE**



3996 Wright Road, Bartlesville OK 74006

Tel 918-335-3318

Fax 918-398-9990

internet..... [www.datadeliverydevices.com](http://www.datadeliverydevices.com)

email..... [info@datadeliverydevices.com](mailto:info@datadeliverydevices.com)